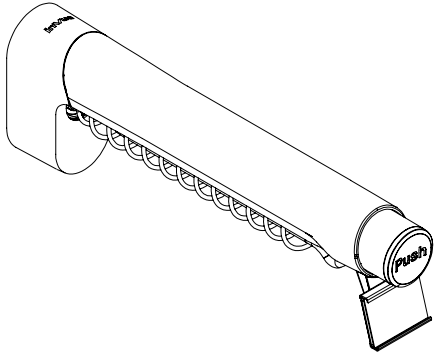


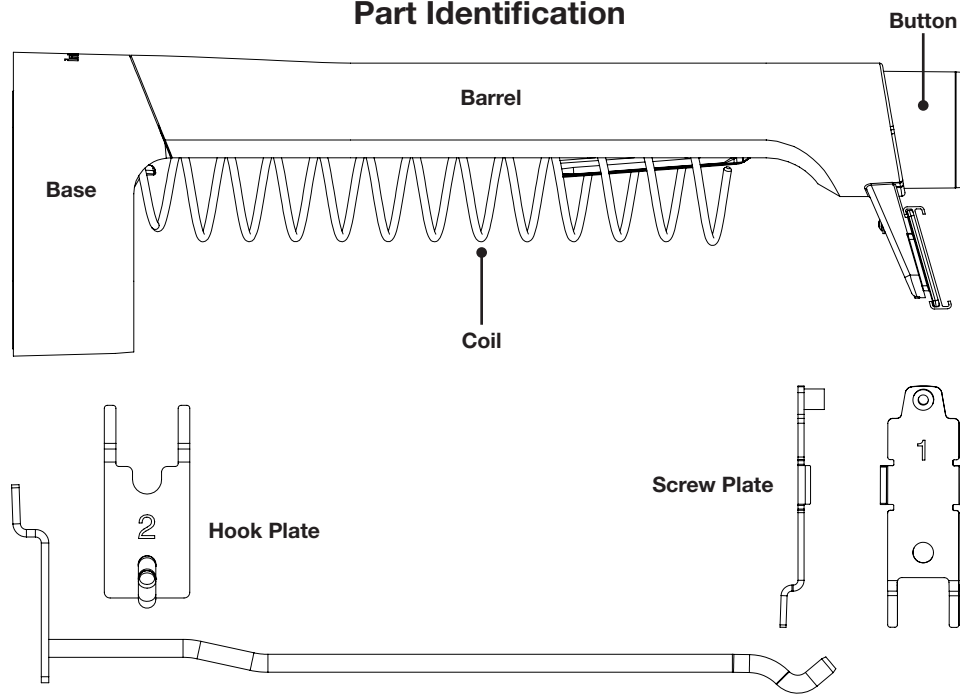


### T1000

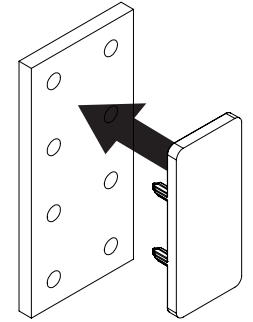
Anti-Sweep Dispenser  
T1040, T1041, T1042, T1046-A,  
T1046-AMETAL, T1046-E,  
T1046-EMETAL



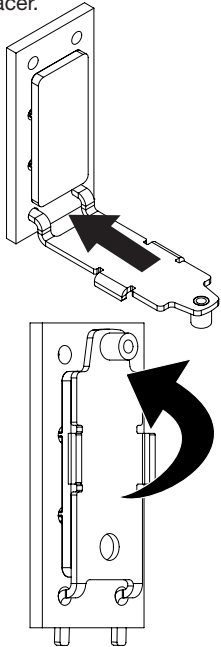
### Part Identification



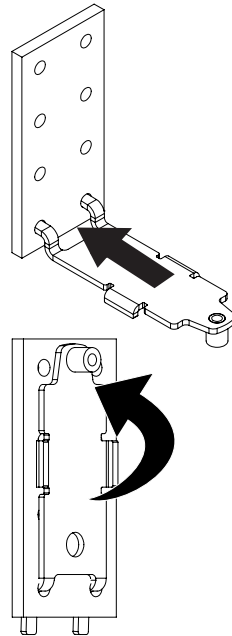
- 1a** Optional:  
If needed, place the spacer against the peg board.



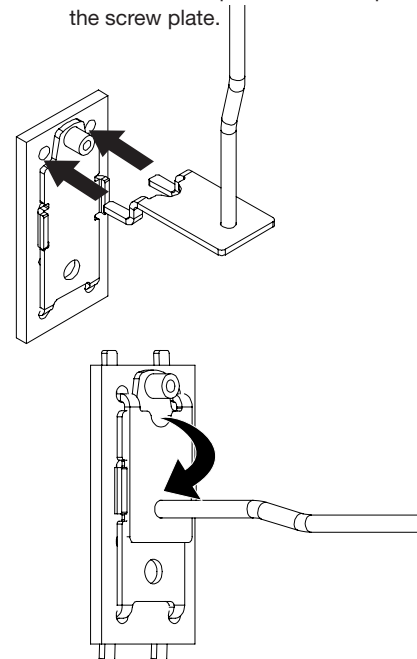
- 1b** Optional:  
Install the screw plate over the spacer.



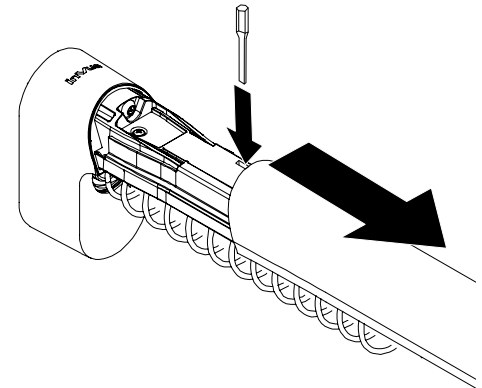
- 2a** Install screw plate against peg board.



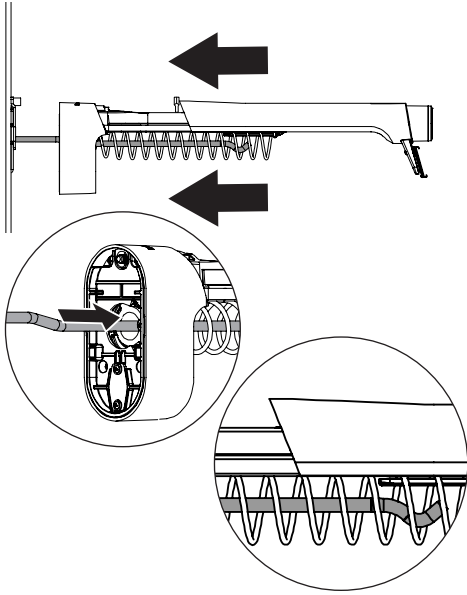
- 2b** Hold the screw plate in place and install the hook plate over the top of the screw plate.



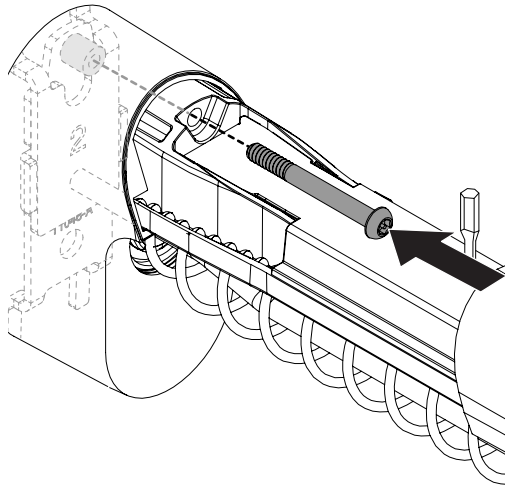
- 3** Hold the rear housing in one hand and slide the barrel several inches away from the rear housing.  
**Hold the barrel in place.**  
**Note:** Insert the sensor removal multitool attachment (AF6313) into the slot on the top of the T1000. If not available, hold it in place by hand.



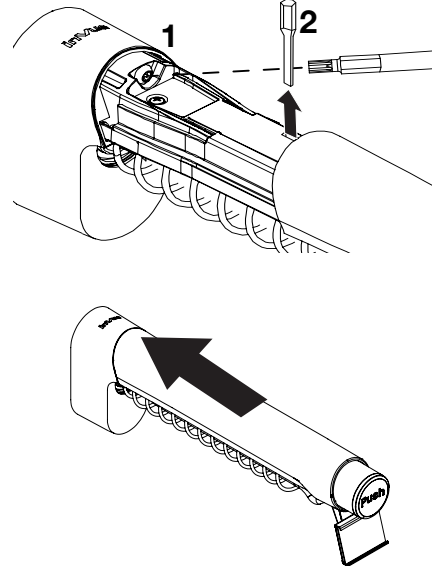
- 4 While holding the barrel open, feed the hook through the hole in the back of the rear housing. Ensure the hook feeds all the way through the coil.



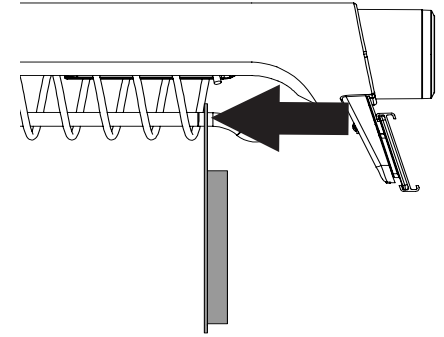
- 5 Push the T1000 against the wall while aligning the screw with the hole in the screw plate. **Continue to hold the barrel open.**



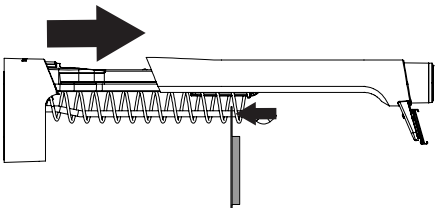
- 6 Tighten the screw using the T20 bit with the multitool (AF6313.) Remove bit and release the barrel so it returns to the closed position.  
**Note:** Do not overtighten screw.



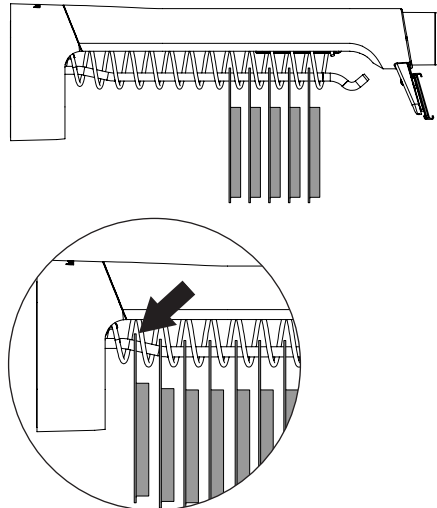
- 7 **Loading product:**  
Place merchandise packaging on hook and hold against coil.  
**Note:** Before loading any products make sure all tension on the internal spring is released by depressing the button until the coil no longer moves.



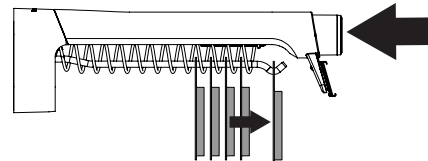
- 8 While holding the packaging against the coil, pull barrel to its **full extension** then return it to its closed position. Verify product is hanging on the rod and the coil is not threaded through the hangtab.



- 9 Repeat to load additional products, ensuring that one product is loaded in each coil space.  
**Note:** Do not overload past the last coil space.



- 10 Push button to dispense merchandise.



SD0428 Rev6 11/13/2017

**invue**

[www.invue.com](http://www.invue.com)

NA / LATAM // 704.752.6513 • 888.55.INVUE  
EMEA // +31.23.8900150  
APAC // +852.3127.6811

© 2017 InVue Security Products Inc. All rights reserved.  
InVue is a registered trademark of InVue Security Products.